



ACCLAIM
HOMEBUILDERS
CORPORATION



The Shelby

Designed exclusively for Acclaim Homebuilders by Jeff Pfeifer, our story and a half Shelby floor plan provides a spacious yet warm feel starting from its vaulted ceiling great room with a see-through gas fireplace into the hearth room. The covered patio provides the perfect spot to watch golfers on Creekmoor's championship golf course or your kids in the backyard.

The welcoming foyer, elegant dining room, and expansive kitchen with breakfast nook help create the perfect home for family and friends to relax before, during, and after a meal. The custom cabinets, granite countertops, and walk-in pantry create a gourmet kitchen work area that any chef would appreciate. After your guests have left for the evening, the first floor master suite with its tray ceiling, lavishly appointed bathroom, and spacious walk-in closet provides an unrivaled place to unwind.

The second floor features three generously sized bedrooms with walk-in closets. One bedroom is designed to serve as a private guest suite with its own private bathroom, while the other two bedrooms share a large Jack & Jill style bathroom.

The Shelby also features a three car garage with an exterior entry door. Finally, with multiple windows providing egress and pre-plumbing for a bathroom, we can finish the full basement to accommodate your needs.

Living Space

- Total 2,836 sq. ft. finished
 - Main Floor: 1,947 sq. ft.
 - Second Floor: 889 sq. ft.
 - Basement: 1,947 sq. ft. (unfinished)
 - Covered Patio: 150 sq. ft.

Details

- Bedrooms: 4
- Master Bedroom Location: 1st Floor
- Full Bathrooms: 3
- Half Bathrooms: 1
- Living Areas: 2
- Dining Areas: 2
- Garages: 3

ACCLAIM HOMEBUILDERS CORPORATION

18921G East Valley View Pkwy, #182
Independence, MO 64055
www.acclaimhomebuilders.com

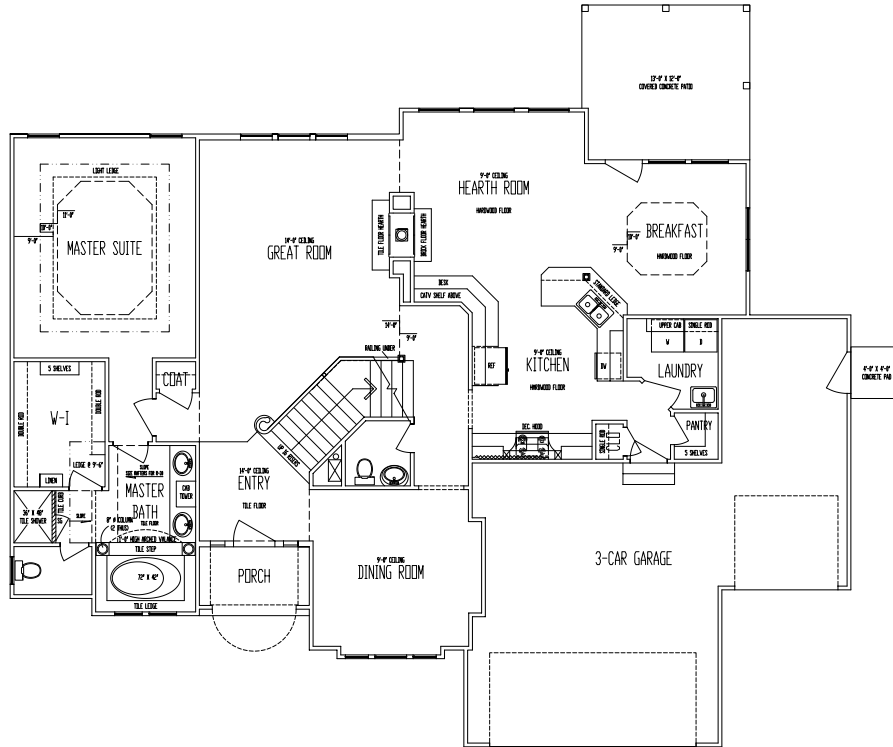
GENERAL MANAGER

Tom Randall
816-812-0151
tom@acclaimhomebuilders.com

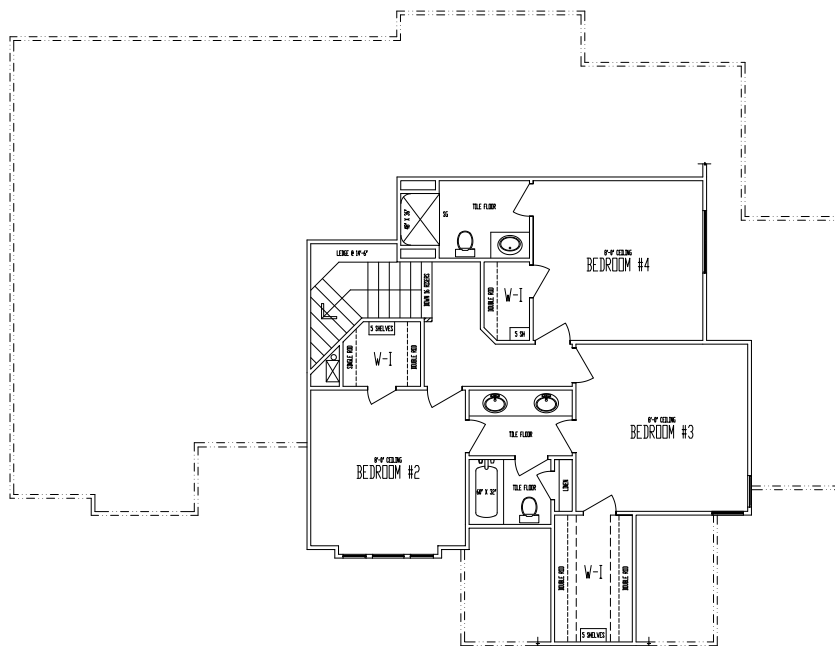


ACCLAIM
HOMEBUILDERS
CORPORATION

Main Floor



Second Floor



DISCLAIMER

The Shelby is ©2008 Viewpoint Residential Design LLC. Square footage values and room dimensions are approximate and subject to field variation. Specifications are subject to modification without notice.

COPYRIGHT

©2008 Acclaim Homebuilders Corporation
Revision May 5, 2008