



ACCLAIM
HOMEBUILDERS
CORPORATION



Examples of Acclaim's Energy-Efficiency Green Technology

This packet shows examples of some of the energy-efficiency materials that we provide as standard in our homes at Creekmoor. At the end of the packet, our Standard Feature Sheet for Creekmoor is also included for your reference.

If you have any questions about regarding the energy-efficiency products that we use, or questions about green building, please contact don't hesitate to contact us. Thanks.

Thomas Randall, General Manager
Phone (816) 812-0151

Matthew Rankin, President
Phone (816) 812-1635



ACCLAIM
HOMEBUILDERS
CORPORATION

High Efficiency Insulation Example



Acclaim's High Efficiency Insulation Standard Feature

- Optima® blown, high efficiency insulation package with
 - R-33 fiberglass insulation in heated area ceilings
 - R-15 fiberglass insulation in 2"x4" exterior living area walls
 - R-23 fiberglass insulation in 2"x6" exterior living area walls



ACCLAIM HOMEBUILDERS CORPORATION

18921G East Valley View Pkwy, #182
Independence, MO 64055
www.acclaimhomebuilders.com

GENERAL MANAGER

Tom Randall
816-812-0151
tom@acclaimhomebuilders.com



Acclaim's Radiant Barrier Standard Feature

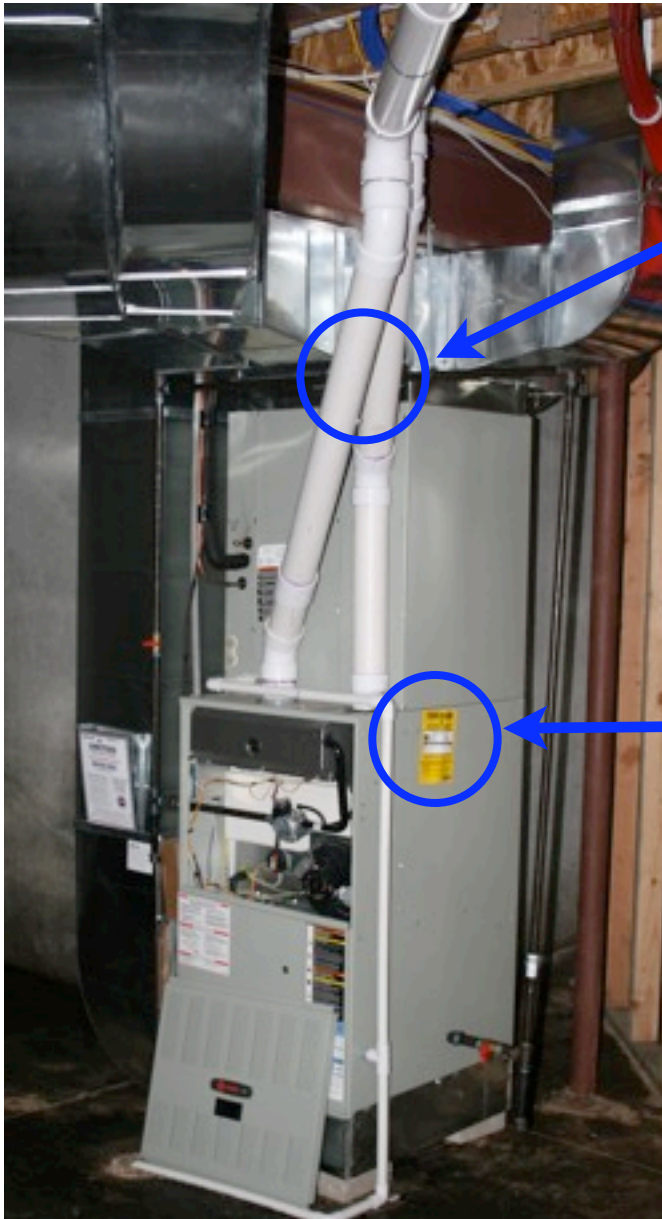
- LP® TechShield® Radiant Barrier or equivalent to reduce the amount of energy needed for cooling and heating by reducing the radiant heat gain the summer and reducing the radiant heat loss in the winter





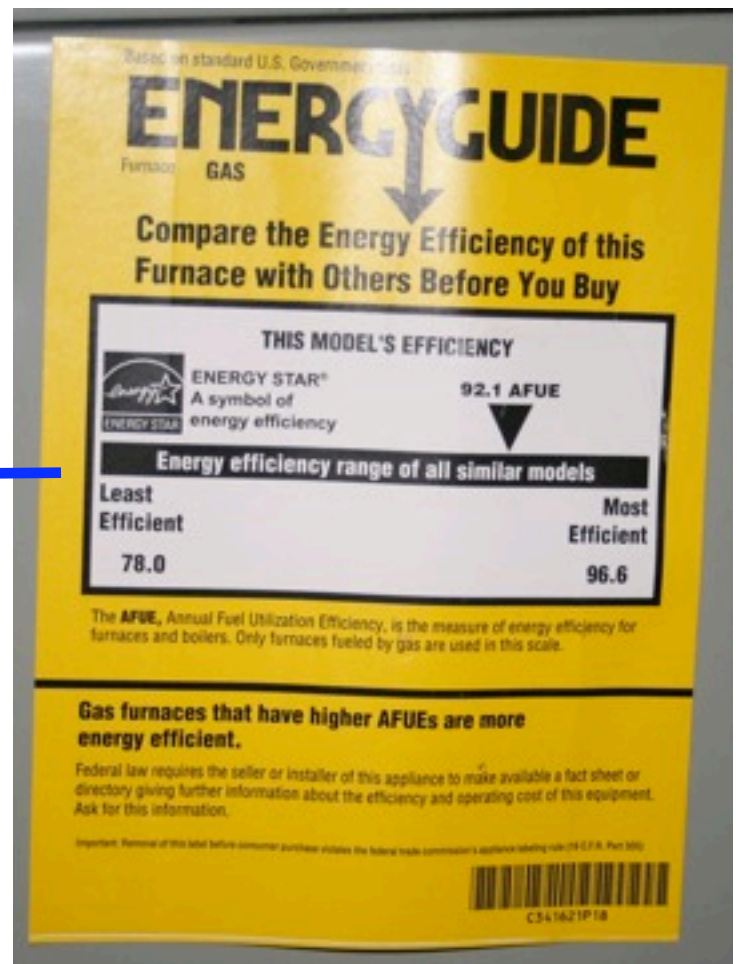
ACCLAIM
HOMEBUILDERS
CORPORATION

High Efficiency Gas Furnace Example



Acclaim's High Efficiency Gas Furnace Standard Feature

- Example of 92.1 AFUE rated high efficiency, ENERGY STAR® certified furnace with air intake and exhaust PVC pipes circled.





ACCLAIM
HOMEBUILDERS
CORPORATION

PEX Manifold Plumbing System Example

Acclaim's PEX Manifold Plumbing System Standard Feature

- Viega PureFlow® MANABLOC® PEX Manifold Plumbing System delivers hot water up to four times faster and provides a central control unit for whole house water supply



ACCLAIM HOMEBUILDERS CORPORATION

18921G East Valley View Pkwy, #182
Independence, MO 64055
www.acclaimhomebuilders.com

GENERAL MANAGER

Tom Randall
816-812-0151
tom@acclaimhomebuilders.com



Energy Saving “Green” Features

- Dupont Tyvek® house wrap and flashing system for moisture protection
- LP® TechShield® Radiant Barrier or equivalent to reduce the amount of energy needed for cooling and heating
- Optima® blown, high efficiency insulation package with
 - R-33 fiberglass insulation in heated area ceilings
 - R-15 fiberglass insulation in 2”x4” exterior living area walls
 - R-23 fiberglass insulation in 2”x6” exterior living area walls
- CertainTeed Thermaflex® Low “E” vinyl casement, insulated windows with argon gas and screens to save heating and cooling costs and block 87% of UV radiation
- Fiberglass panel front door
- Insulated garage doors
- High efficiency gas furnace with programmable thermostat
- High efficiency 13 SEER or higher electric central air conditioning with heat pump
- Viega PureFlow® MANABLOC® PEX Manifold Plumbing System delivers hot water up to four times faster and provides a central control unit for whole house water supply
- High efficiency, quick recovery 50 gallon gas hot water tank
- GE Profile™ ENERGY STAR® appliances

Exterior Features

- Masonry front exterior
- 3-car garage with finished and painted interior and 8’ garage doors and door openers
- Seamless gutters, downspouts, and splash blocks
- Architectural shingle roof with 40 year warranty
- Foundation wall height of 9’
- Deck or concrete patio
- Sodded yard with automatic irrigation system
- Two (2) exterior hose bibs
- Gas line provided for outdoor natural gas grill connection

Interior Features

- Minimum 9’ ceilings on first floor (per plan)
- Gas fireplaces with logs (per plan)
- Frieze, stain resistant carpet with minimum 6 lb. pad (per plan)
- Tile flooring in all full bathrooms and laundry room
- Hardwood flooring in foyer, kitchen, breakfast nook, hearth room, and powder room (per plan)
- Brushed nickel or rubbed bronze finished interior hardware
- Wainscoting, chair rail, and ceiling medallion in formal dining
- Crown molding in foyer, kitchen, breakfast nook, great room, dining room, and master bedroom
- All basements with either walk-out grade level access or window wells for egress (per plan)

Kitchen Features

- GE Profile™ 30” electric cooktop
- GE Profile™ 30” convection wall oven
- GE Profile™ microwave oven
- GE Profile™ dishwasher
- Stainless steel double-bowl sink
- Custom, raised-panel cabinets with hidden hinges and pull out lower shelves
- Granite countertops in kitchen
- Ceramic tile backsplash in kitchen
- Water line for ice maker
- Garbage disposal

Bathroom Features

- Delta®, Moen®, or equal faucets in all bathrooms
- Cultured marble vanity tops
- Plate glass mirrors above vanities
- Double vanities in master bathroom (per plan)
- Whirlpool tub in master bathroom
- Clear glass shower enclosure in master bathroom
- Private commode in master bathroom
- Ceramic tile shower and tub surround in master bathroom
- Ceramic tile flooring in all full bathrooms

Electrical Features

- Minimum 150 Amp circuit breaker electrical service
- Two (2) exterior GFI outlets, front and rear of house
- Accent soffit lights on front of house
- Smoke detectors hard-wired with battery backup
- Pre-wire package for phone and cable
- CAT5e for all phone/network lines
- Pre-wired for security system
- Designer lighting fixture package
- Recessed can lighting (per plan)
- Ceiling fans per plan

Heating, Cooling, and Plumbing

- High efficiency 90%+ gas furnace with programmable thermostat
- High efficiency 13 SEER or higher electric central air conditioning with heat pump
- High efficiency, quick recovery 50 gallon gas hot water tank
- Rough plumbing provided for bathroom in basement

Laundry Room Features

- Fiberglass drop in laundry tub with cabinet (per plan)
- Ceramic tile floor
- In-wall dryer vent box

DISCLAIMER

Features, specifications, and/or materials are subject to change or modification without notice.

COPYRIGHT

©2008 Acclaim Homebuilders Corporation
Revision May 10, 2008